

Skydisc™ Adjustable Wall/Ceiling Light Range

EM Pack installation instructions JC131003



Warning & cautions

- It is recommended that luminaires are installed by a qualified electrician to ensure the installation complies with the local current wiring regulations.
- Any broken or damaged parts should be replaced as soon as possible.
- JCC will not accept responsibility for claims arising from sub-standard installations; which will void the warranty.
- The external flexible cable or cord of this luminaire cannot be replaced; if the cord is damaged the luminaire shall be destroyed.
- Terminal block not included. Installation may require advice from a qualified person and ensure Class II wiring is maintained
- The light source of this luminaire is not replaceable.
- This luminaire is suitable for indoor use only.
- It may be necessary to upgrade your MCBs to allow for increased inrush current.
- It is recommended that the ambient room temperature should not exceed 40°C.
- Ensure that you have the tools and accessories required to complete the installation correctly: Isolate the power before starting installation.
- This product is non-dimmable

INSTALLATION

ENGLISH

For use with Non-dimmable Adjustable Wall/Ceiling Light range only- JC131001

not suitable for use with CCT Triac dimmable version -JC131002

Terminal block must comply to: EN 60998-2-1 or EN 60998-2-2

Fig.1. EM Mains input
220-240V~ 50/60Hz / Class II

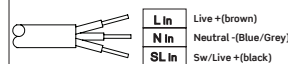
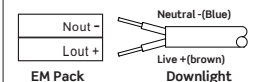
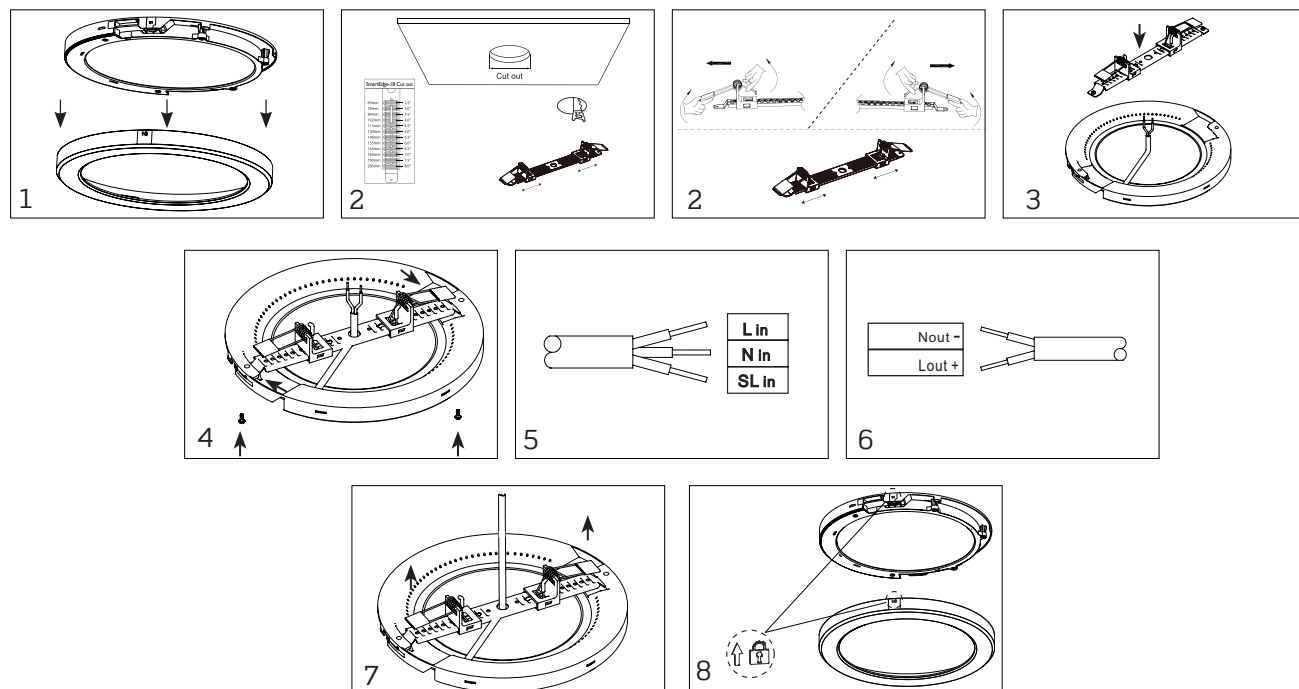


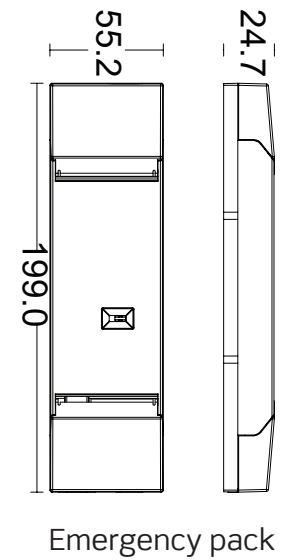
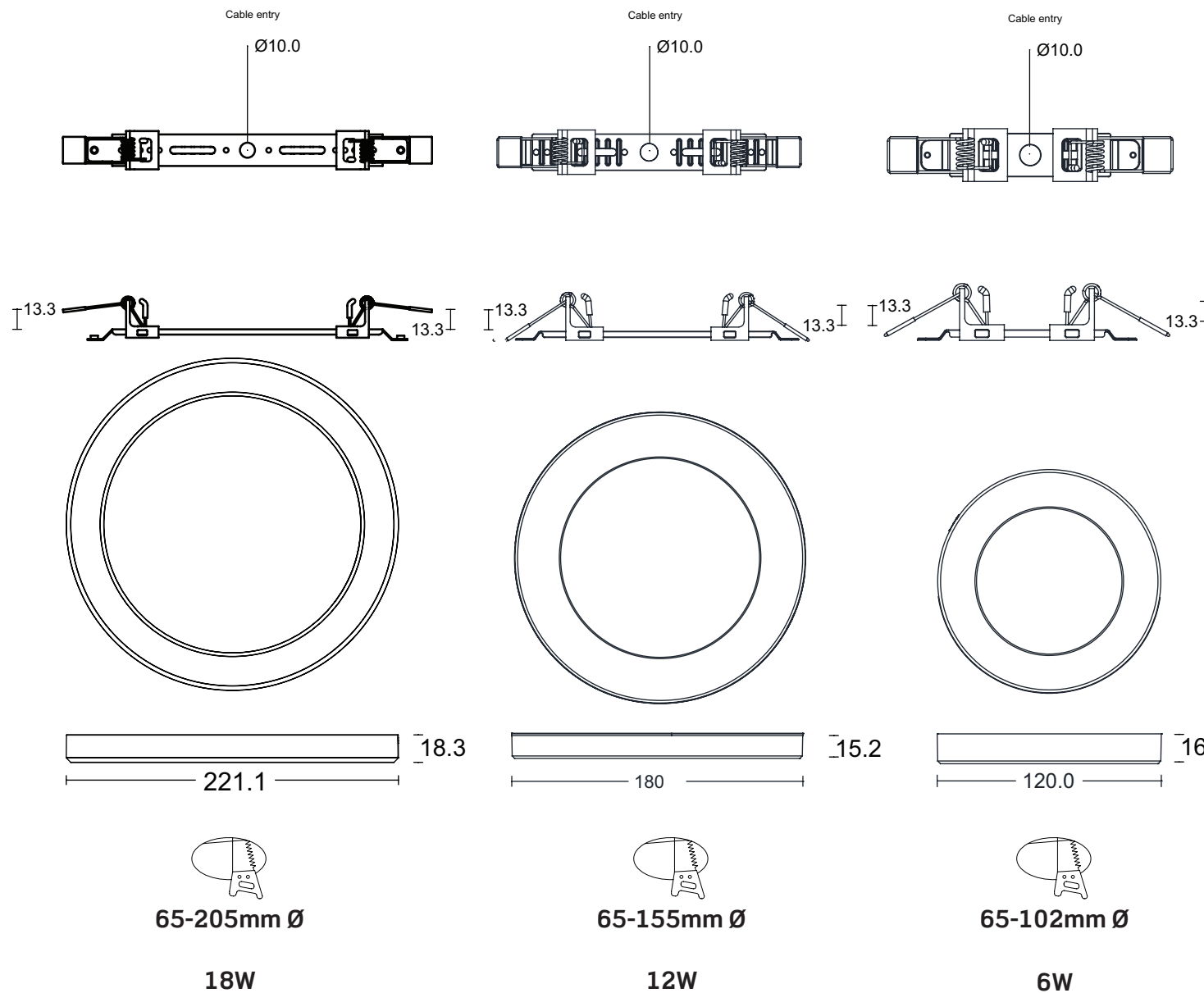
Fig.1a. Downlight mains input to EM pack



Emergency pack JC131003 installation for recessed mounting using bracket with spring clips

- The rim is a snap fit onto the body of the 18W downlight. To release the rim, apply gentle pressure to the back edge of the rim, pulling towards the front.
- To recess mount into the ceiling using the bracket with the spring clips, measure the cut out and adjust the spring clips on each side to match the opening.
- Feed the downlight power input cable through the centre hole of the bracket.
- Fit bracket to the downlight and rotate 20° and lock into place with security screws from the front.
- Connect to the mains input connections to the downlight Emergency pack JC131003 as per Fig.1. ensuring that the power cables are not causing any obstruction.
- Connect the live and neutral wires from the Downlight to the Lout+ and Nout- of the remote pack Fig.1.a.
- Pull spring clips up to allow them to fit through the opening then push the downlight up until flush with the ceiling until secure
- Refit the rim to the 18W downlight by aligning the padlock symbol on the rim with the one on the downlight
- Apply even pressure until it snaps into place.
- Test for correct operation, allow 24 hrs before testing emergency.





Important warranty information

This product is supported by a 2-year standard warranty which will extend to 3 years if registered within the first year of purchase. (2 year on batteries). Please register at jcc.co.uk/warranty - Terms and conditions apply.

The installer will be asked to provide the following information, which is detailed on a label attached to the luminaire's chassis:
Product Code/Date Code.

