

Skydisc™ Adjustable Wall/Ceiling Light Range

Installation instructions JC131001



Warning & cautions

- It is recommended that luminaires are installed by a qualified electrician to ensure the installation complies with the local current wiring regulations.
- Any broken or damaged parts should be replaced as soon as possible.
- JCC will not accept responsibility for claims arising from sub-standard installations; which will void the warranty.
- The external flexible cable or cord of this luminaire cannot be replaced; if the cord is damaged the luminaire shall be destroyed.
- Terminal block not included. Installation may require advice from a qualified person and ensure Class II wiring is maintained
- The light source of this luminaire is not replaceable.
- This luminaire is suitable for indoor use only.
- It may be necessary to upgrade your MCBs to allow for increased inrush current.
- It is recommended that the ambient room temperature should not exceed 40°C.
- Ensure that you have the tools and accessories required to complete the installation correctly: Isolate the power before starting installation.
- This product is non-dimmable

INSTALLATION

ENGLISH

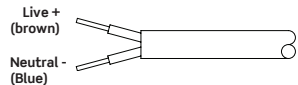
Specifications Colour Temp: 4000K Ra: 80

Wattage	Lumens	LpcW	Beam angle
18W	1500	83	120°

Terminal block must comply to: EN 60998-2-1 or EN 60998-2-2

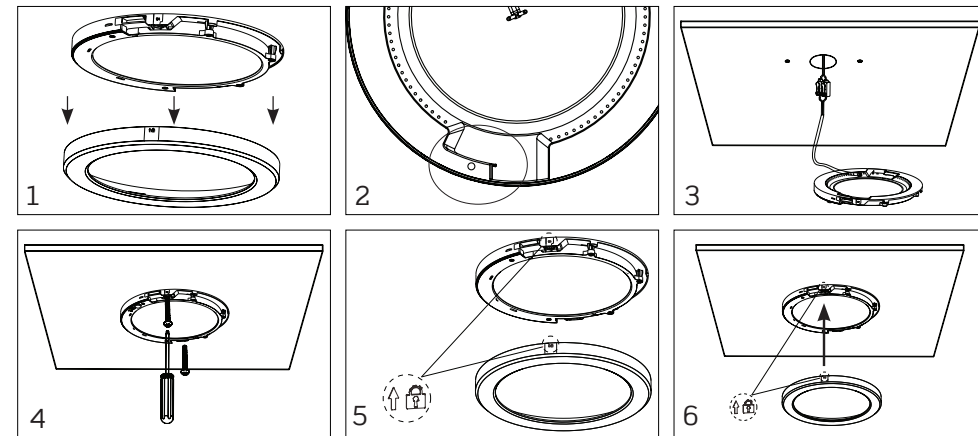
Fig.1. Mains input

220-240V ~ 50/60Hz / Class II



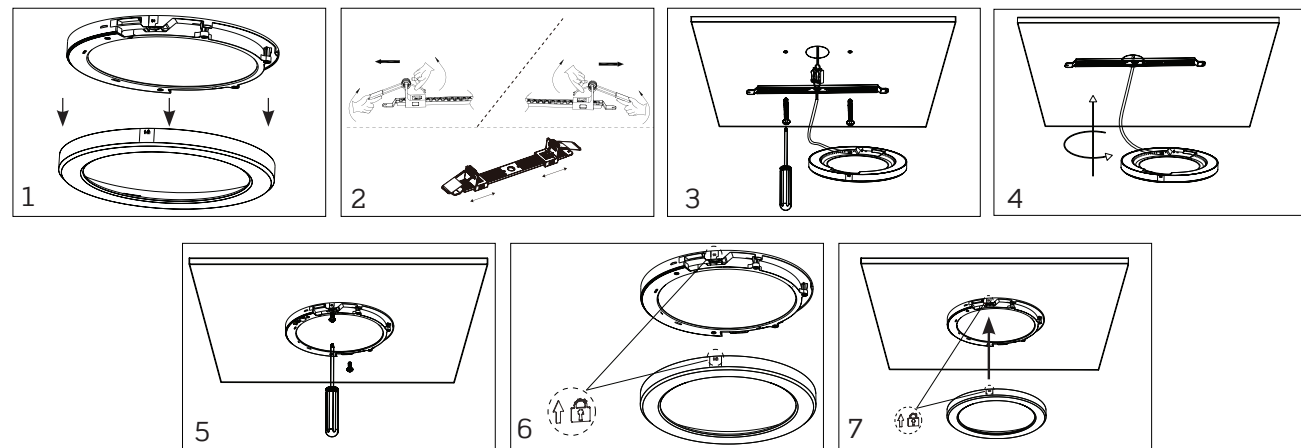
Surface mount without bracket

- The rim is a snap fit onto the body of the downlight. To release the rim, apply gentle pressure to the back edge of the rim, pulling towards the front.
- To surface mount directly onto the ceiling, use the downlight as a template for marking the fixing holes.
- Connect the downlight to the mains supply as per Fig.1.
- Secure the downlight to the ceiling, ensuring that the power cables are not causing any obstruction
- Refit the rim to the downlight by aligning the padlock symbol on the rim with the one on the downlight
- Apply even pressure until it snaps into place.
- Test for correct operation



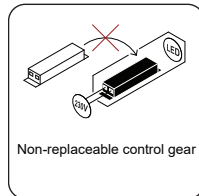
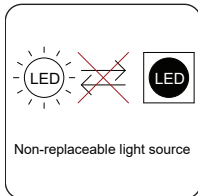
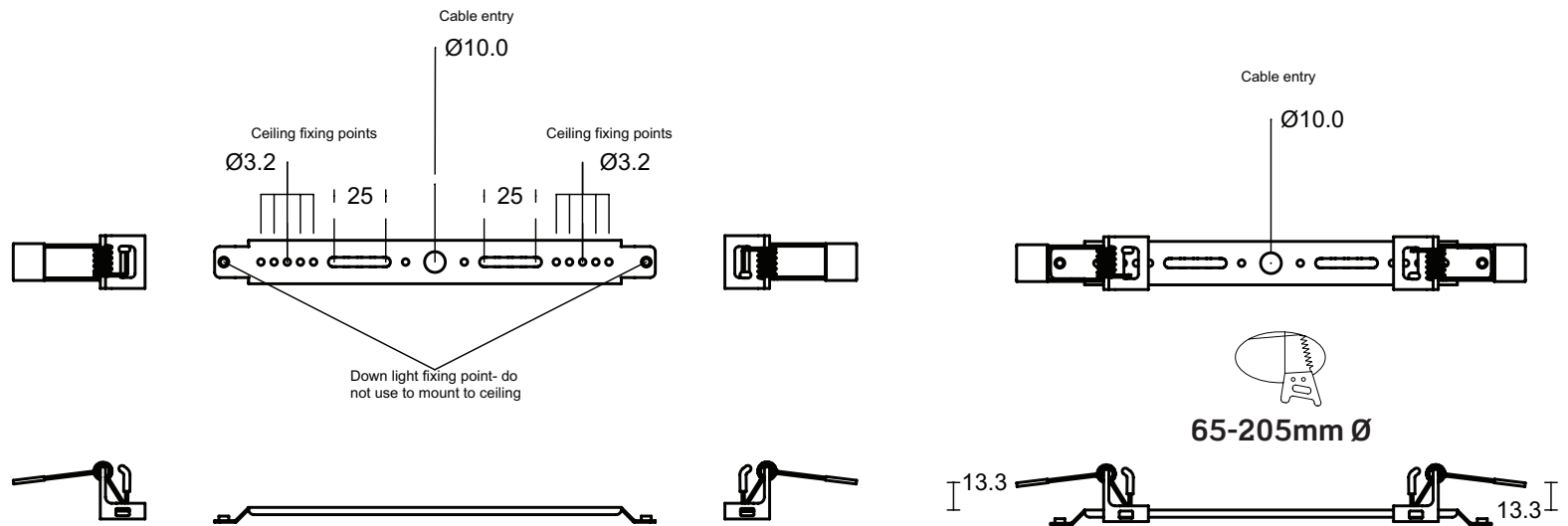
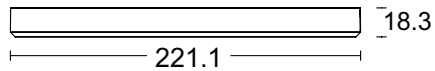
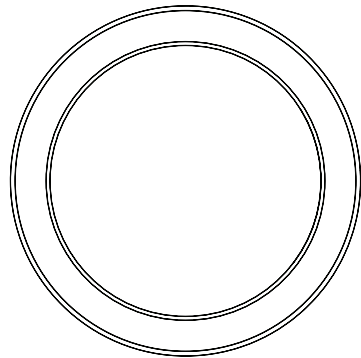
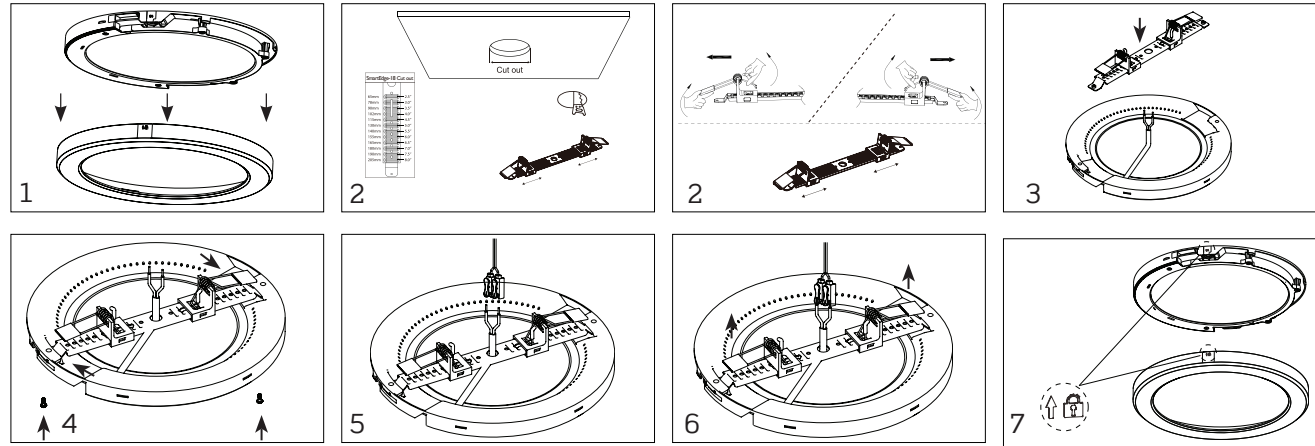
Surface mount using bracket

- The rim is a snap fit onto the body of the downlight. To release the rim, apply gentle pressure to the back edge of the rim, pulling towards the front.
- To surface mount directly onto the ceiling using the bracket, remove the spring clips from the bracket by sliding off each end and discard. Use as a template to mark the fixing points.
- Feed the downlight power input cable through the centre hole and connect to the mains supply as per Fig.1. then fix the bracket to the ceiling.
- Secure the downlight to the ceiling by aligning the downlight with the bracket and rotating counter clockwise 20°.
- Secure in place with the two locking screws, ensuring that the power cables are not causing any obstruction.
- Refit the rim to the downlight by aligning the padlock symbol on the rim with the one on the downlight
- Apply even pressure until it snaps into place.
- Test for correct operation



Recessed mounting using bracket with spring clips

1. The rim is a snap fit onto the body of the downlight. To release the rim, apply gentle pressure to the back edge of the rim, pulling towards the front.
2. To recess mount into the ceiling using the bracket with the spring clips, measure the cut out and adjust the spring clips on each side to match the opening.
3. Feed the downlight power input cable through the centre hole of the bracket.
4. Fit bracket to the downlight and rotate 20° and lock into place with security screws from the front.
5. Connect to the mains supply as per Fig.1. ensuring that the power cables are not causing any obstruction.
6. Pull spring clips up to allow them to fit through the opening then push the downlight up until flush with the ceiling until secure.
7. Refit the rim to the downlight by aligning the padlock symbol on the rim with the one on the downlight.
8. Apply even pressure until it snaps into place.
9. Test for correct operation.



Important warranty information

This product is supported by a 2-year standard warranty which will extend to 3 years if registered within the first year of purchase. (2 year on batteries). Please register at jcc.co.uk/warranty - Terms and conditions apply.

The installer will be asked to provide the following information, which is detailed on a label attached to the luminaire's chassis: Product Code/Date Code.