

Emergency Range

Installation instructions for JC110003 Emergency Bulkhead Self-test



Warnings & Cautions

- To avoid electric shock, serious injury or property damage, isolate power before installing, removing or servicing the product.
- It is recommended that luminaires are installed by a qualified electrician to ensure the installation complies with the local current wiring regulations.
- It may be necessary to upgrade your MCBs to allow for increased inrush current.
- This product is designed for connection to a 220-240V~ 50/60Hz.
- It is recommended that the ambient room temperature should not exceed 26°C.
- All testing should be carried out in accordance to EN 50172:2004
- The light source of this luminaire is not replaceable: when the light source reaches the end of its life the whole of the luminaire must be replaced.
- Read instructions and check that you have all of the tools and accessories required to complete the installation correctly. Isolate power supply before starting installation.
- Do not carry out insulation tests with the product connected to the circuit.
- Any broken or damaged parts should be replaced as soon as possible. JCC will not accept responsibility for claims arising from sub-standard installations; which will void the warranty.
- This luminaire is suitable for indoor and outdoor use.

INSTALLATION

ENGLISH

220-240V~ 50/60Hz - Class II

Colour temp: 6500K Ra: 80

Wire preparation: 1-2.5 mm²

Light source: Integral LED

Wattage: 2W

Lumens: 170 lumens

KEY:
N: NEUTRAL
L: U/SWITCHED LIVE(in)
L1: U/SWITCHED LIVE(out)
L2: Sw/LIVE
E: EARTH PROVISION

Maintained(3M)
 + on/off Switched
 + Emergency

N		Neutral: Blue
L		U/sw Live(in): Black
L1		U/sw Live(out): Black
L2		Sw/Live: Brown
E		E(provision only)

Maintained(3M)
 + Light on 24/7
 + Emergency (linked)

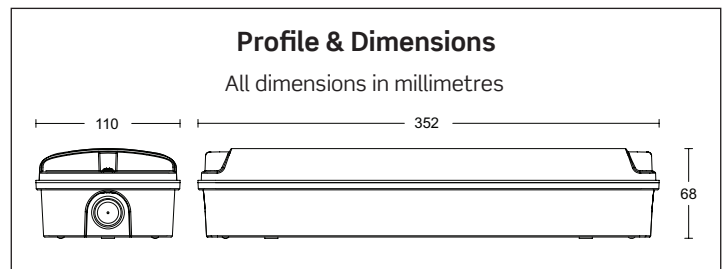
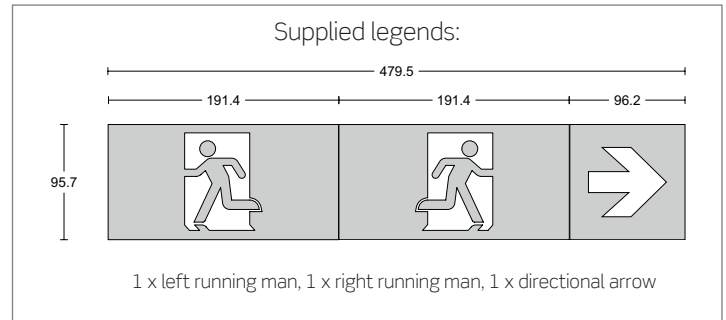
N		Neutral: Blue *
L		U/sw Live(in): Black
L1		U/sw Live(out): Black
L2		Sw/Live: (do not use)
E		E(provision only)*

* Additional connections may be required to link L and L2

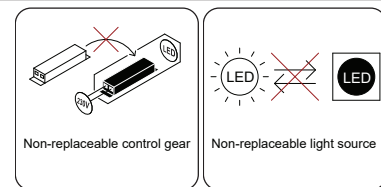
Non-Maintained(3NM)
 + Light off 24/7
 + Emergency (remove link)

N		Neutral: Blue
L		U/sw Live(in): Black
L1		U/sw Live(out): Black
L2		Sw/Live: (do not use)
E		E(provision only)

- Remove the two screws holding the diffuser to gain access to the interior.
- Release the LED tray to access the mains input terminal by pressing the quick release tabs. This is hinged so the LED tray remains attached to the body.
- Cable entry is available through rear, top and bottom or both ends. Ensure appropriate grommets or compression couplings are used to maintain the IP65 rating where required.
- Connect the mains input supply as indicated on the above as per the required operation.
- Connect the emergency battery leads to the circuit board where indicated.
- Close the LED tray, ensuring it is secured using the securing tabs.
- Refit the diffuser ensuring there is a good seal to maintain the IP65 rating.
- Switch on mains supply and test for operation(allow 24hrs for batteries to charge). Charging and normal operation is indicated when the green light is on
- Fit the legends on the front of the diffuser to suit the application from the three choices indicated on the right which are included.
- Familiarise yourself with the enclosed emergency fittings test record sheet and ensure it is completed as required and left with the end user.



Fault/Test/Status	Reason	Indicator Status
Battery charged	Normal operation	Solid green
Battery charging	Initial charge/top up	Solid green
Auto test 10 mins	Monthly test	Green light flashes, and the cycle flashes at intervals of three times
Auto test 180 mins	Annual test	Green light flashes, and the cycle flashes at intervals of four times
Duration test fault	Failed Monthly/annual test	Solid red
LED fault	Not connected/damaged/faulty	Red light flashes, and the cycle flashes at intervals of three times
Battery fault	Not connected/short circuit	Solid red
Simulate Auto test 5 mins	Press and hold the test switch for 3s to enter the 5-minute emergency test	Green light flashes, and the cycle flashes at intervals of two times
Simulate Auto test 10 mins	Press the test button twice within 1 second	Green light flashes, and the cycle flashes at intervals of three times
Simulate Auto test 180 mins	Press the test button three times within 1 second	Green light flashes, and the cycle flashes at intervals of four times
Turn off simulated Auto test mode	Press and hold the test button for 3-5 seconds in simulated test mode	N/A



CE UK RoHS Compliant IP65 jcc.co.uk

Important warranty information

This product is supported by a 2-year standard warranty which will extend to 5 years if registered within the first year of purchase. (5 year on batteries). Please register at jcc.co.uk/warranty - Terms and conditions apply.

The installer will be asked to provide the following information, which is detailed on a label attached to the luminaire's chassis:
 Product Code/Date Code.

