



**READ THESE INSTRUCTIONS THOROUGHLY BEFORE INSTALLATION KEEP THESE INSTRUCTIONS FOR FUTURE REFERENCE.**

**IMPORTANT:**

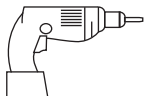
This product must be installed by a qualified electrician or competent person, and in accordance with current building and IET wiring regulations.

**BOX CONTENTS**

This lighting fixture has been properly packed to avoid damage during transit. Before commencing with the installation carefully inspect the luminaire to confirm there is no damage. DO NOT INSTALL if any damage has occurred to the fixture or any of its components.

- Light Fitting
- Instruction Manual
- Fixing Kit

**TOOLS REQUIRED**



- Drill

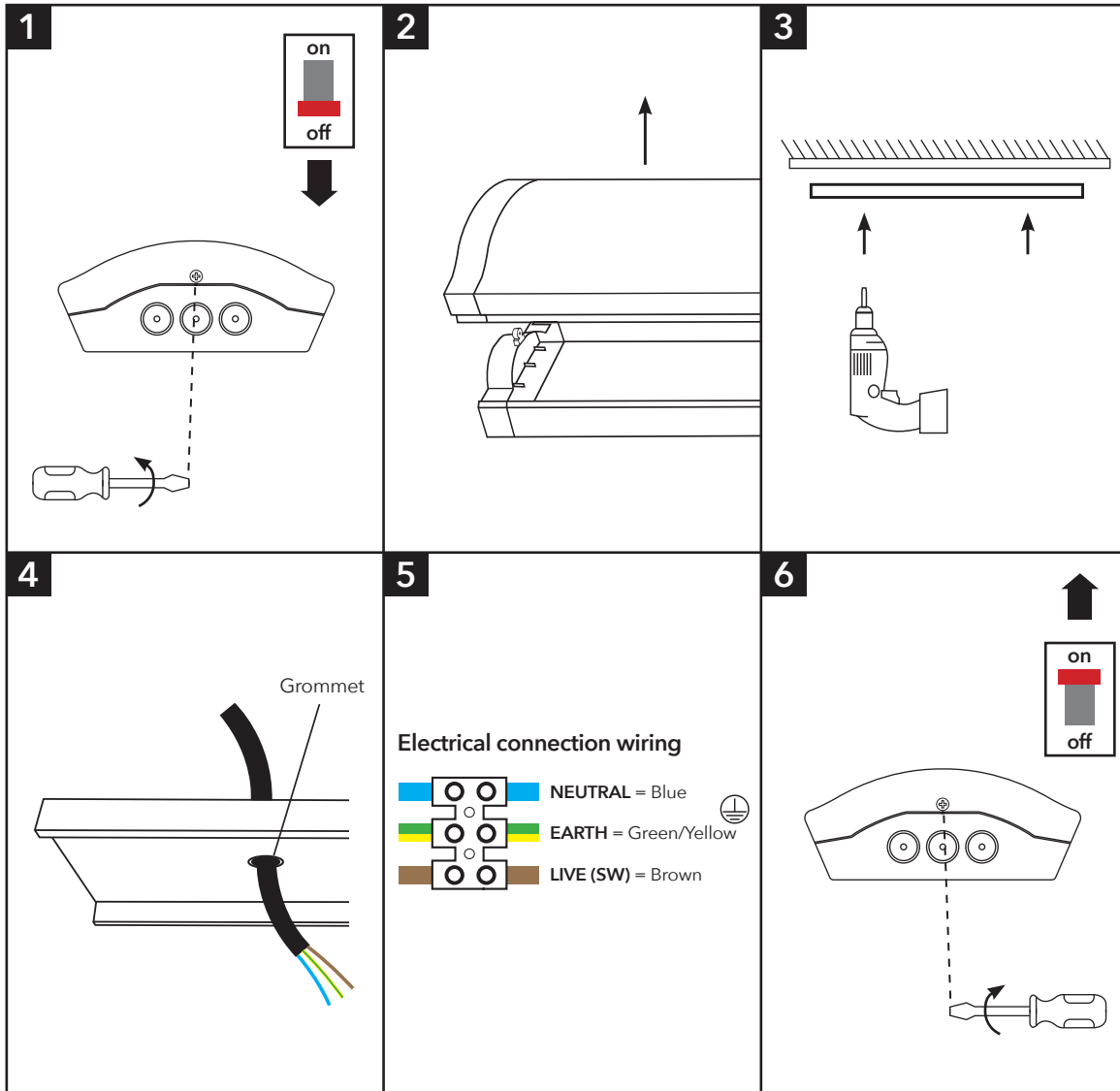


- Screwdriver



- Cable

**INSTALLATION INSTRUCTIONS**



**PLEASE READ THESE INSTRUCTIONS BEFORE INSTALLATION.**



**WARNING: Risk of electric shock! Isolate the mains power before proceeding.**

- Turn off the mains power before performing inspections, installation, or removal
- Verify that the supply voltage is correct by comparing it with the luminaire label information
- It is the installers responsibility to ensure installation is suitable for the total load of the luminaire(s). The supply cable, fuses/circuit breakers must be correctly rated for the electrical load and considering for any transient inrush currents that may occur
- Do not perform insulation strength or resistance tests on installed luminaire(s) connected

1. Loosen the screws in each end of the product
2. Unclip the diffuser from the base
3. Secure the base to your desired location
4. Feed cable through the required entry point
5. Wire as per diagram (5)
6. Connect battery (emergency versions only)
7. Re-fit the diffuser
8. Tighten the screws at each end of the product
9. Re-connect the mains supply

### DISPOSAL

Disassemble instructions for end of life disposal available on website.

Disposal of Electronic Equipment WEEE Directive 2002/96/EC This product falls within the scope of the Waste Electrical & Electronic Equipment Directive (WEEE), which means the product should not be disposed of as normal household waste. Please recycle where facilities exist or check with your Local Authority. RoHS - All components and materials used in this product are RoHS 2002/95/EC compliant.

Specifications may change from time to time. The information contained in this leaflet is for guidance only and should not be considered as always accurate and should be treated as not representative.

### WARRANTY

This luminaire is warranted for a period of 5 years from the date of purchase\*\*. The backup battery pack in the emergency version is warranted for a period of 24 months. The warranty could be invalidated should the light fitting not be installed according to these instructions, outside the scope of the specification or the product has been altered or tampered with in any way. Please see website for terms and conditions.

### PRODUCT TEMP SPECIFICATION

Standard 0° to +45°C  
Emergency 0° to +25°C

### OLTON ACADEMIC BATTEN DIMENSIONS

Part No.	Description	Watts	L(mm)	W(mm)	H(mm)	Weight
401611	4ft Twin	38W	1190	203	83	2.3Kg
401612	5ft Single	30W	1490	203	83	2.5Kg
401613	5ft Twin	58W	1490	203	83	2.5Kg

### MICROWAVE SENSOR SETTINGS

**Detection Range:** Hold time and daylight sensor can be set by using DIP switches on the sensor. Note that reducing the detection area will reduce the sensitivity.

**Hold Time:** Refers to the time period the lamp remains at 100% illumination after no motion is detected.

**Daylight Sensor:** The sensor can be set to only allow the lamp to illuminate below a defined ambient brightness threshold. The settings are as shown.

### STANDARD ON/OFF SENSOR

DETECTION AREA				HOLD TIME			DAYLIGHT SENSOR							
	1	2	3	4	5	6	7	8	9					
I	ON	ON	ON	100%	I	ON	ON	ON	5S	I	ON	ON	ON	2Lux
II	-	ON	ON	75%	II	-	ON	ON	30S	II	ON	ON	-	10Lux
III	ON	-	ON	50%	III	ON	-	ON	90S	III	-	ON	-	25Lux
IV	-	-	ON	25%	IV	-	-	ON	5Min	IV	ON	-	-	50Lux
V	-	-	-	10%	V	ON	ON	-	20Min	V	-	-	-	Disable
					VI	-	-	-	30Min					

Installation Engineers Contact Details:		Luminaire Reference / Location	
Name:	Tel:		

Luminaire Details:	Full Recharge Duration 24 Hours	Emergency Duration 3 Hours	Lamp Type LED

ROUTINE TEST RECORD										
Type Test	Year 1		Year 2		Year 3		Year 4		Year 5	
	Signed	Date	Signed	Date	Signed	Date	Signed	Date	Signed	Date
Functional 1										
Functional 2										
Functional 3										
Functional 4										
Functional 5										
Functional 6										
Functional 7										
Functional 8										
Functional 9										
Functional 10										
Functional 11										
3hr Duration 12										

\*\* Please see our website for more detailed information on warranty.

### Wiring instructions for units equipped an with EMERGENCY function

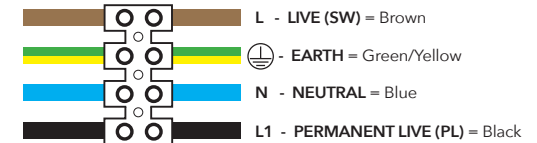
Emergency lighting luminaires must be installed and maintained in accordance with the emergency lighting standard BS 5266-1

1. Connect incoming earth cable to 'Earth' terminal on connector block.
2. Connect incoming neutral cable to 'Neutral' terminal on connector block.
3. For the emergency unit to work correctly, please ensure that an uninterrupted permanent live feed is present and is connected directly to the 'Permanent Live' terminal of the mains terminal block. Please ensure there are no switches, PIRs etc within the permanent live feed, constant switching of the emergency pack could result in premature battery failure.
4. Connect incoming switched live cable to the terminal marked "Switched Live"

**NOTE: If there is no switch live feed and the unit has a microwave sensor, simply bridge across from the "Permanent Live" to the Switch Live" on the mains terminal block.**

5. There should be a loose flying lead connected to the battery. This needs to be attached to the flying lead from the emergency control unit.
6. Following power up the green LED indicator should illuminate to indicate charging. If power to the unit is disrupted or isolated, the unit indicating green LED will switch off, triggering the emergency LEDs to illuminate.
7. Please allow 24 hours charge before first emergency test.

### EMERGENCY FITTINGS ONLY. EARTH CONNECTION REQUIRED.



### Self-Test EMERGENCY function

The self-test version of emergency is fitted with control gear that will carry out periodic functional tests every 1 month and full duration test every 12 months.

Status	Description
	Standby, System OK Mains Operation, battery is charged
	Function test underway Function test underway
	Duration test underway Duration test underway
	Lamp failure Open Circuit or Short Circuit or LED failure
	Battery capacity failure Battery failed duration test
	Battery fault Incorrect battery voltage or Short Circuit or Open Circuit
	Battery Operation Emergency mode: Mains disconnected or Mains failure

This product contains a light source of energy efficiency Class E.